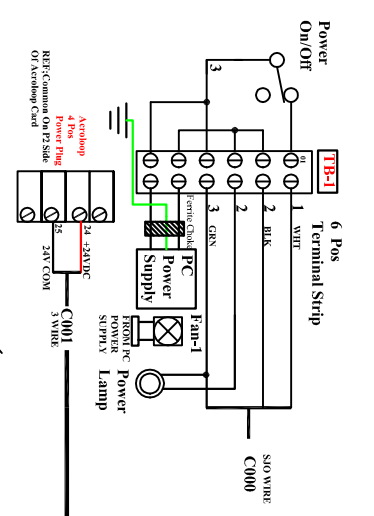
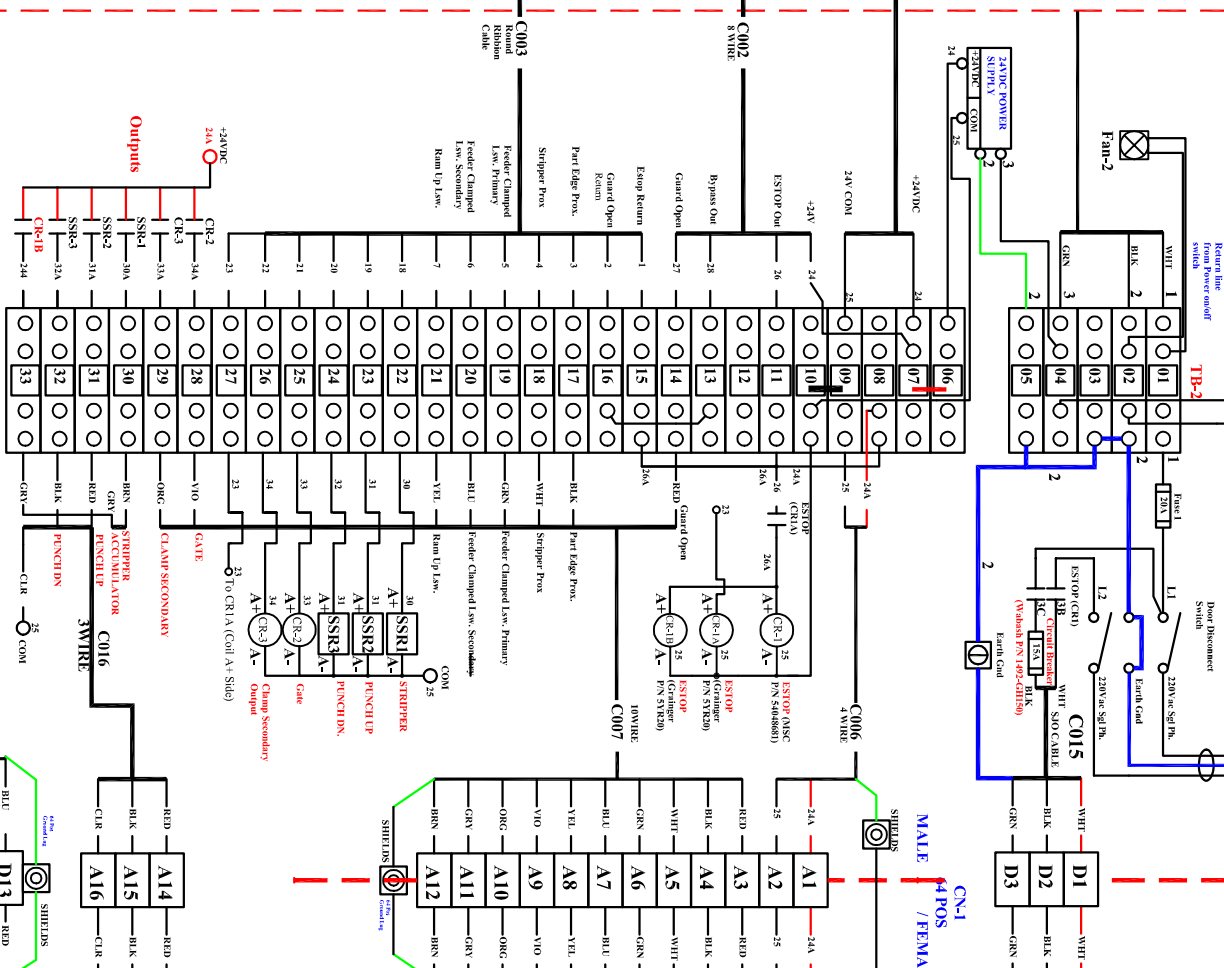


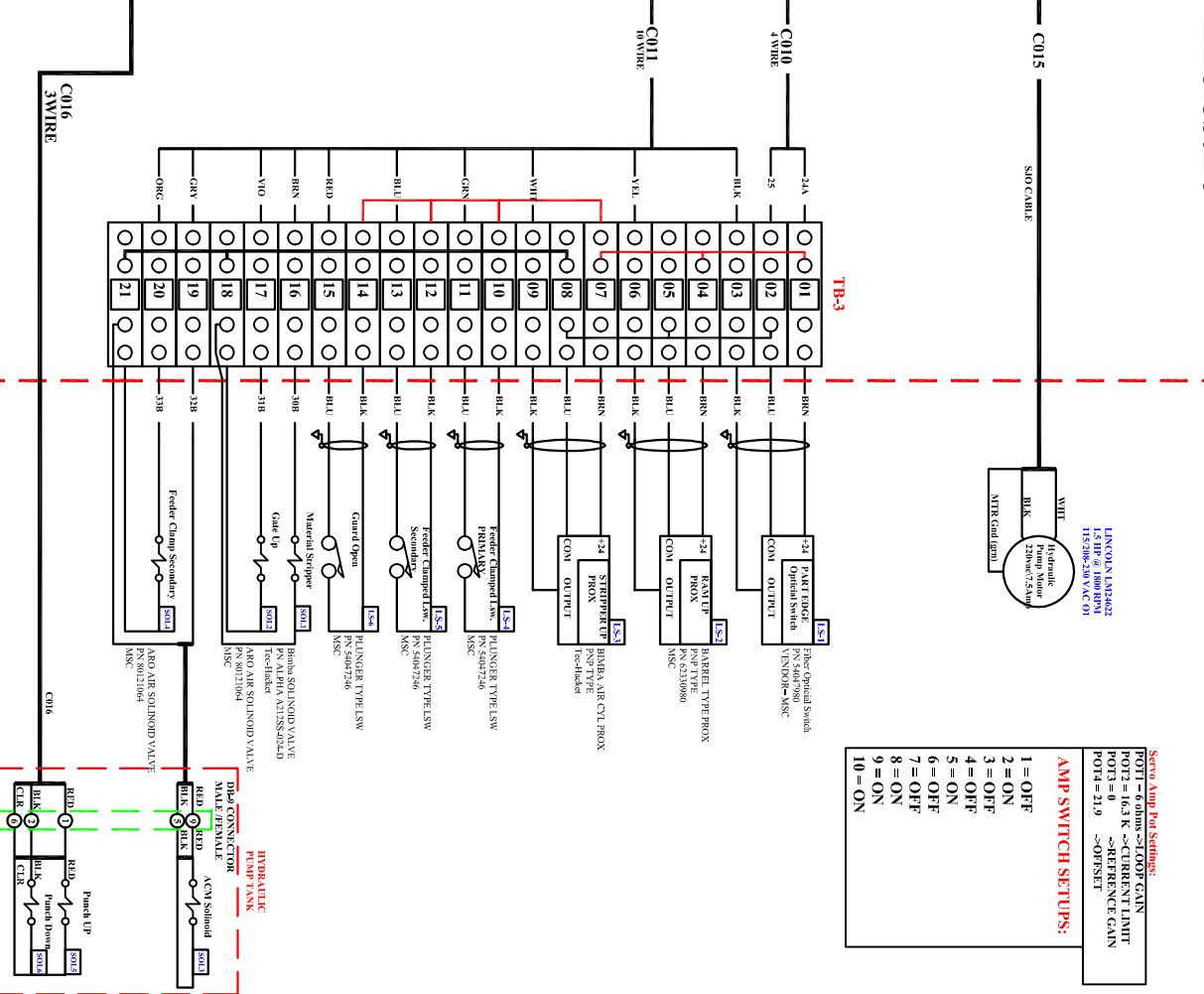
# Inside Console



# Main Electrical Enclosure



# 10 X 10 JIC Enclosure



**Servo Amp Pos Settings:**

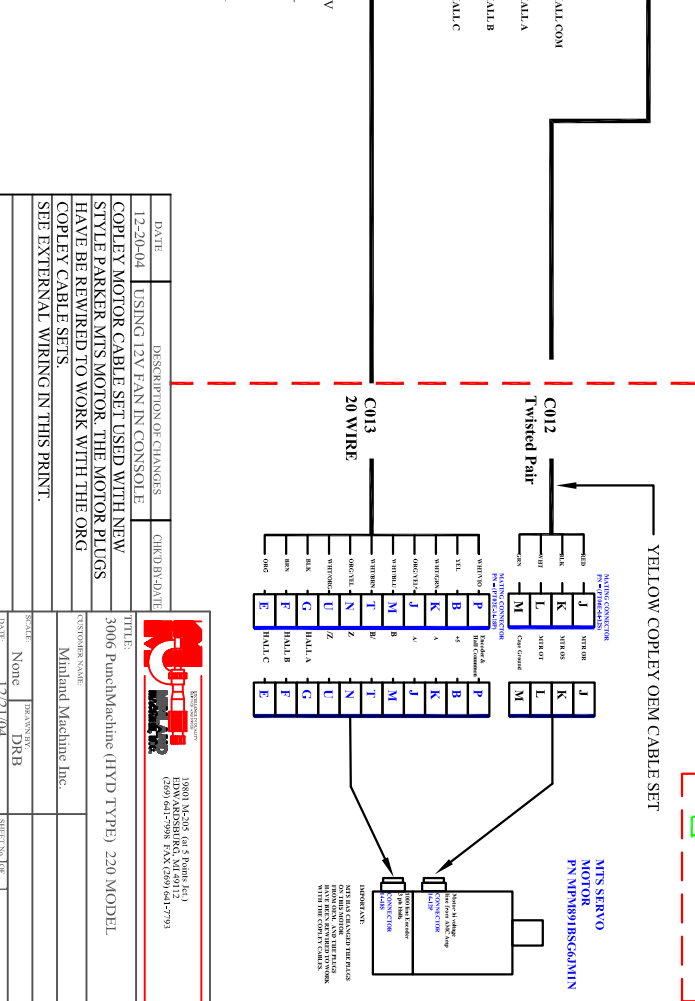
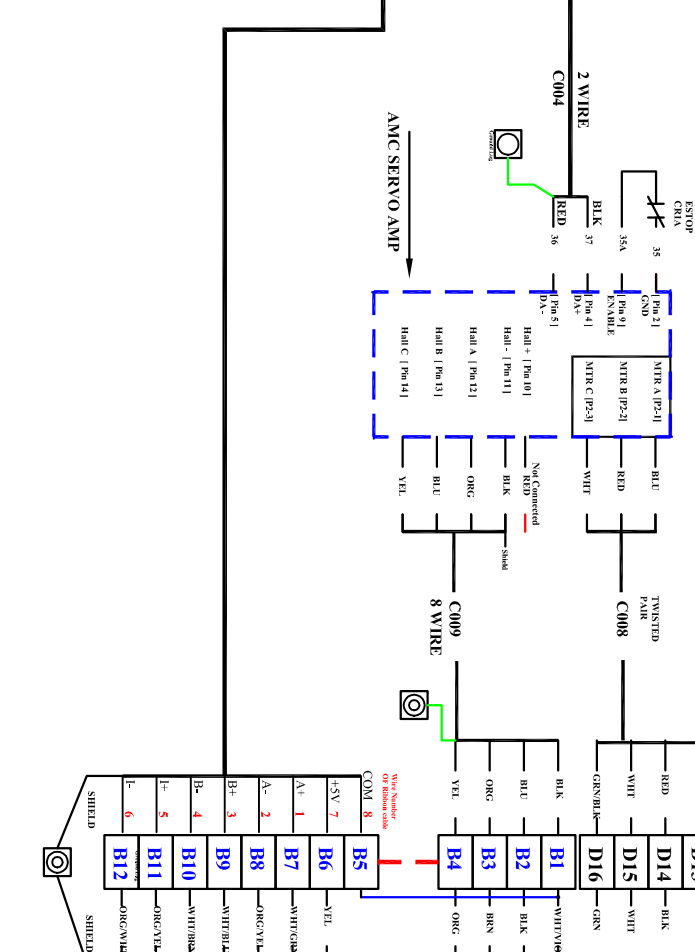
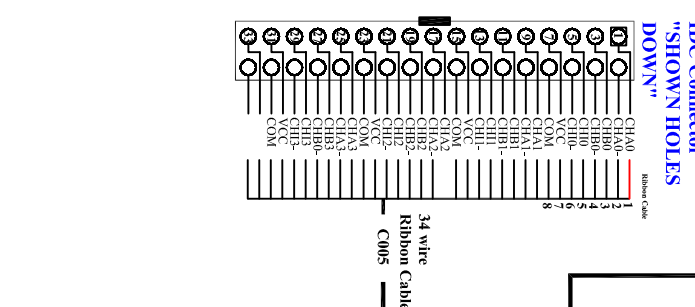
POT1 = 0Vms - STOP GAIN  
 POT2 = 0.5 K - SERVO NC GAIN  
 POT3 = 0  
 POT4 = 219  
 -OFFSET

**AMP SWITCH SETTINGS:**

1 = OFF  
 2 = ON  
 3 = OFF  
 4 = OFF  
 5 = ON  
 6 = OFF  
 7 = OFF  
 8 = ON  
 9 = ON  
 10 = ON

**Bit / I/O Map**

NP 0 -> Emergency Stop  
 NP 1 -> Safety Guard Open  
 NP 2 -> Part Edge Prox.  
 NP 3 -> Stripper Prox.  
 NP 4 -> Feeder Clamped (Primary LSW)  
 NP 5 -> Feeder Clamped (Secondary LSW)  
 NP 6 -> Ram Up Prox.  
 Out 0 -> Material Stripper  
 Out 1 -> Punch Up  
 Out 2 -> Punch Down  
 Out 3 -> Gate  
 Out 4 -> Clamp Secondary  
 Out 5 -> System On (Starts Pump/Enables Estop)



**DATE:** 12-20-04  
**DESCRIPTION OF CHANGES:** CHECK BY DATE

**TITLE:** 3006 PunchMachine (HYD TYPE) 220 MODEL

**CUSTOMER NAME:** Miniland Machine Inc.

**SCHEMATIC:** None  
**DESIGNER:** DRB  
**DATE:** 12/21/04

