

## Reports Features:

### Program change Log:

All changes made by the operator to the part program are recorded, and can be viewed using this built in report generator.

Useful in tracking part program changes or quality problems.

### Production Log:

Use to report production ran on machine.

Sort by - Product, Operator, Date Range

## MACHINE SPECIFICATION

Operating system	Windows 2000
Length	52 inches
Width	38-1/2 inches
Height	63 inches
Weight	
Electrical Supply	20 amp 220 Volt Single phase
Holes Per Minute	90 to 120 (depending on hole center distance)
Average setup time	2 To 3 Minutes

### Contact:

Minland Machine, Inc.

19801 OLD 205

Edwardsburg, Mi. 49112

Phone: 269-641-7998

Fax: 269-641-7793

Email: { [HYPERLINK mailto:dansr@direcway.com](mailto:dansr@direcway.com) }

Minland Machine, Inc.  
19801 OLD 205  
Edwardsburg, Mi. 49112

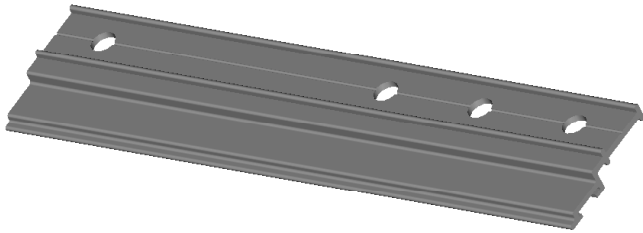
CNC Controlled Hydraulic Clamp Ring Punch



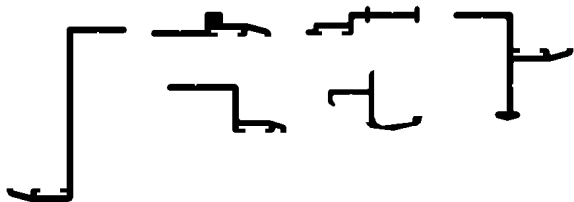
New Autopunch  
New Autopunch

Designed to punch the mounting holes in a variety of aluminum extrusions. Autopunch5 is a CNC hydraulic punch machine with a servo driven feed system. Designed for easy operation, simply load the desired part program then set the feed rolls to fit the extrusion and insert the material on the right side of the machine. The machine will advance the material and punch holes in the programmed locations. The completed part will be ejected on the left side of the machine. With an electrically interlocked guard system that encloses the entire working area, the Autopunch5 is your solution to safe and fast punching of all your aluminum extrusions.

**Easily program the machine to punch hole at any location on the part.**



**Sample extrusions:**



## CUSTOM SOFTWARE FEATURES:

- 1) Windows 2000 Operating system
- 2) Save, Edit part programs.
- 3) 1000 programmable hole locations per part program.
- 4) Built in software to calculate hole locations for you.
- 5) Software security system to prevent unauthorized users from changing part programs.
- 6) On line maintenance log
- 7) On line production log - keeps track of operators and product production history
- 8) On line help screens
- 9) Network connection provided

### Main Operating Screen

File Setup Reports Help

Stop Run Log Off PUMP ON

Program Name C:\AutoPunch5\Program Files\SAMPLE6.bed  
 Print Revision R Date Created 4/7/2004 Parts Count 0 Reset  
 Part Number SAMPLE5  
 Part Length 72 Operator Dan Sr (ADMINISTRATOR)

Hole#	Location
Hole# 1	2.000
Hole# 2	8.000
Hole# 3	14.000
Hole# 4	20.000
Hole# 5	26.000
Hole# 6	32.000
Hole# 7	38.000
Hole# 8	44.000
Hole# 9	50.000
Hole# 10	56.000
Hole# 11	62.000
Hole# 12	68.000

Manual Controls: JOG Forward, JOG Reverse, Punch Down, Punch Up, Gate Up, Gate Down, Stripper Up, Stripper Dwn., Clamp Up, Clamp Dwn..

Machine Status: Punch UP, Zero Switch, Part Complete, Guards Lock, E\_STOP Button, Feeder Clamped, Disable Gate, Cycle Time 0

Machine Position: 0000.000 InPos

100 % Ready ... Press Run to Start Cycle

Error Message

Creating new programs is easy - simply type in the hole locations And press the RUN Button